

EQUUS

YOUR PARTNER IN THE FOREST





EQUUS

YOUR PARTNER IN THE FOREST

In the beginning, there was an idea to produce special forestry skidder that originated from our more than 12 years of experience with servicing forestry machinery. We responded to requirements of customers who demanded a forestry skidder with long service life, easy maintenance and parameters comparable to world class machines. And all that should be completed by an affordable price. **We are proud that we were fully successful in achieving this goal and that is how the EQUUS 175N wheeled forestry machine has been developed.**

First prototypes of skidders were produced in 2014 and 2015. A year later, more than 30 machines were produced and sold. **Today, we produce 4 skidders per month.** Our machines are operated not only in Slovakia, but in other countries too. At present, we have our satisfied customers in Czech Republic, Hungary, Poland, Slovenia, Romania, Germany, Austria, Switzerland or Australia. Other machines are expected in France, Belgium and other countries over the world.

Our company started with four employees. At present, we employ more than 42 qualified employees of different professions. **As one of few companies, we use the highest share of our own components in the machine** (frames, cabin, reel, blade, shield and hydraulic arm), which allows us not only to control the quality parameters throughout the production process, but also to flexibly respond to new market demands, to develop and implement own innovative solutions and, last but not least, to maintain an affordable price for the final product. We have our own developing centre, which allows us to respond promptly to requests of the market and customers as well.



We are proud, that our skidders may be labelled as Made in Slovakia.

CONTENTS

- 6 EQUUS 175N
- 10 EQUUS 175N **BL**
- 14 EQUUS 175N **BH**
- 18 EQUUS 175N **UN**
- 22 EQUUS 175N **UH**
- 26 EQUUS 175N **6WDC**
- 30 PTO – Cardan
- 31 Different uses
- 32 Gallery
- 35 Coming soon...

EQUUS 175N **BL**

Page 10 – 13



EQUUS 175N **UN**

Page 18 – 21



EQUUS 175N **6WDC**

Page 26 – 29



EQUUS 175N **BH**

Page 14 – 17



EQUUS 175N **UH**

Page 22 – 25



EQUUS 175N **UK**

Coming soon...



EQUUS 175N

We are introducing you the most-effective forestry skidder in its category EQUUS 175N, which key attributes are robustness and high work done efficiency linked with economic returns.

Skidder is characterised by simple handling to meet the most demanding current criteria of the customers. It is provided by most advanced hydrostat with the perfectly managed cooling system. **This high-power forest machine allows transport by road with speed 40 km/h up to more that 100 km.** The lowest centre of gravity predetermines it for work in most challenging terrains. As one of the first companies, we started to use the best combustion

engines at class STAGE V, we increased the efficiency of transmissions and logic of entire skidder, what allowed us to save 20 to 30 % of fuel cost at 1m³ harvested timber. **It means not only to save fuel cost and reduce emissions, but also to provide longer service life, better price/ proportion of the price and work done.** At last, but not the least, it can provide users with higher profit for 1m³ and as a result, maximum added value.



Engine

As one of the first forestry machine manufacturers, EQUUS has installed the most advanced CUMMINS B45 engine that meets the requirements of the most demanding STAGE V emission class.

This 4-cylinder engine with the direct fuel injection with the power of 175 PS and torque of 780 Nm perform you power comparable to the bigger and more expensive 6-cylinder engines, moreover it is lighter, economical and environmentally friendly.

Type: CUMMINS B45

Power: 129 kW @ 2200 rpm – 780 Nm @ 1500 rpm Stage V.

At the moment the highest environmental standards and with certificates from producer of combustion engine.

Specifications: diesel, 4-stroke with direct fuel injection (Electronic Common Rail)

Nr.of cylinders: 4

Volume of cylinders: 4,5L

Fuel cleaning: water separator, fuel filter

Lubrication: pressurized, circulating with wet oil pan and oil filter

Cooling: coolant circulation through the water pump, termoregulator's valve

Placed: in connection with hydrogenerators

Handling: pedal with potentiometer



Gearbox

We have used a hydraulic-motor concept with enlarged volume of 300 ccm and 45° swinging plate. The higher volume of the hydraulic motor decreases its maximum speed, the swinging plate increases its effectiveness.

The 1st gear is suitable for the speed of 0–18 km per hour and for dragging at optimum engine speed, which is the most important contribution to transmission efficiency. The 2nd gear allows the skidder to travel easily over long distances without stopping at the speed of up to 40 km per hour. Hydraulics and certificate are both supplied by DANFOSS company.

Gearbox: Hydrostatic transmission with 3 automatic modes and 2 mechanical transmissions (turtle/rabbit) in a timing case, maximum speed of 40 km per hour forwards and backwards. The timing case allows for the disconnection of the rear axle 4x4 / 4x2.

Characteristics: The hydrostat is a low-rpm and low-pressure system. By increasing the volume of the hydraulic-motor and decreasing the volume of the transmission, we achieved the optimum efficiency. With our skidder, you will be able to use roads without any fears of engine or hydraulic system overheating, with the speed of up to 40 km per hour! The behaviour of the hydrostatic transmission does not differ from a standard transmission – it does not slow down under load.

Speed:

I – turtle: Speed range 0 – 18 km/h will allow you to hold an engine when towing a timber in a range, where the speed is as effective as possible and the power leads to reduction of fuel consumption and increase of longer service life.

II – rabbit: Speed range 0 – 40 km/h is designed for comfortable transport not only at highways.



Cabin

The cabin, which is an in-house production by EQUUS, offers the highest safety parameters. Not only does it meet the basic limits of the OPS, FOPS and ROPS standards, it even exceeds them.

The cabin's position is as low as possible. It thus offers the most convenient way to get in and out of the cabin. Lighting is intelligently installed inside the body and therefore it allows, together with the use of high-quality glass, to eliminate the use of grille protectors. They might be fitted, however, if a customer requests so. The cabin has two doors and therefore it offers the possibility to mount on the tractor from both sides. The rear view is improved – there is a new glass panel in the roof of the cabin for better view when working with the hydraulic arm.

Characteristics: EQUUS (FOPS, ROPS, OPS) tilting safety cabin is equipped with Plastrans safety glass (with certificate A/M), suspension, two doors and a 315° rotating workstation (seat). The cabin complies with the strictest safety standards requiring the resistance of the cab to roll-over and breakage.

Equipment: Controlling – steering wheel with 2 joysticks, Radio MP3 / USB, electricity 24V, 4 working lights, heating and the sun visor.



Hydraulic arm EQUUS 120 kN

EQUUS designed his own hydraulic arm, which is able to haul down under the cab level for more comfortable road transport, but also for transport by truck.

Ruggest 2-stages construction with lifting moment to 120 kN netto and technical concept allows us to not only manipulate with it without any problems, but also tow a timber. Three different types of this arm allow you to choose the most suitable version depending on what specific operating conditions you are working at.

Besides the grapple from Gripen company, we are installing also harvester heads from SP Maskiner AB or Nisula companies at our hydraulic arms.



Frames and axles

Frames of this forestry skidder are completely welded from the S690 high-strength sheets, which contribute to the high rigidity and long service life of the machine.

Axles manufactured by well-known producer NAF with the parameters of 17 t / 4200 Nm are used as standard in higher-class skidders.

Intentional over-dimensioning of this key component provides our skidder with a substantial reserve in durability and loadability even under the toughest operating conditions.



Winch

Thanks to the our own long-standing development EQUUS designed new type of reel with drum capacity up to 160 m of rope Ø14 mm and towing power up to 15 t.

Winch is equipped with spur gearing, which ensures longer life and easier service. You can choose between 2 speed levels 1,35 m/s and 0,65 m/s and towing power in range from 8 up to 15 t.



Compactness

Depending on the type of used tyres, the skidder reaches height from 2,82m up to 2,88m and the width of the skidder starts by 2,42m. Even while using tyres of 23.1-26 (590mm width), the total spread of the skidder is in range of 2,45m, such spread is necessary for safe transport by standard version of any truck. Possibility of this kind of transport obviously not only saves the time, but also money. This attribute together with a possibility to transport themselves over 100 km at one time belongs to the most competitive advantage of EQUUS skidder.



Performance and power

EQUUS 175N with its wight and dimensions belongs to the middle-class between similar skidders, but with the towing power meets parameters of higher category, which means 6-cylinder engine machines. With the axles of 17 t / 4200 Nm, axle drive and cardans from higher class concept, wheel base, lower gravity, up-to date engine in combination with our own unique technical solutions, we are able to meet parameters and towing power of more expensive machines in higher classes, with no need to rise a price of the skidder.



Scan QR code and watch the video

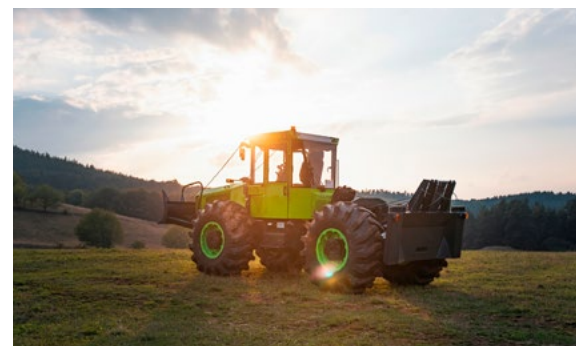


WHEELED FORESTRY SKIDDER **EQUUS 175N BL**

The basic concept of forestry skidder EQUUS 175N BL with front blade, rear shield and winch.

EQUUS is the ideal choice for users, who are accustomed to classic type of work and prefer work only with reel and blade.

Weight of skidder begins at 8.500 kg.



Technical parameters

Basic specification

Length	6480 mm
Width	2450 mm
Height	2980 mm
Ground clearance	560 mm
Weight	8500 kg

Engine

Type	CUMMINS B45, STAGE V.
Power	129 kW (175 hp) / 2200 rpm
Torque	780 Nm / 1500 rpm
Type	diesel with direct fuel injection (Electronic Common Rail)
No. of cylinders	4
Volume of cylinders	4,5 l
Fuel system	water separator, fuel filter
Lubrication	pressurized, circulating with wet pan and with oil filter
Cooling	coolant circulation with wet pump and oil filter, termo-regulation valve

Gearbox

Type	hydrostatic
Specifications	3 automatical modes and 2 mechanical transmission
1. speed	0 - 18 km/h (turtle)
2. speed	0 - 40 km/h (rabbit)
Max. speed	40 km/h forward and backward

Hydraulic system

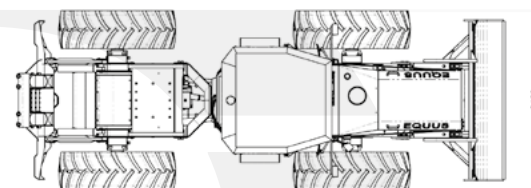
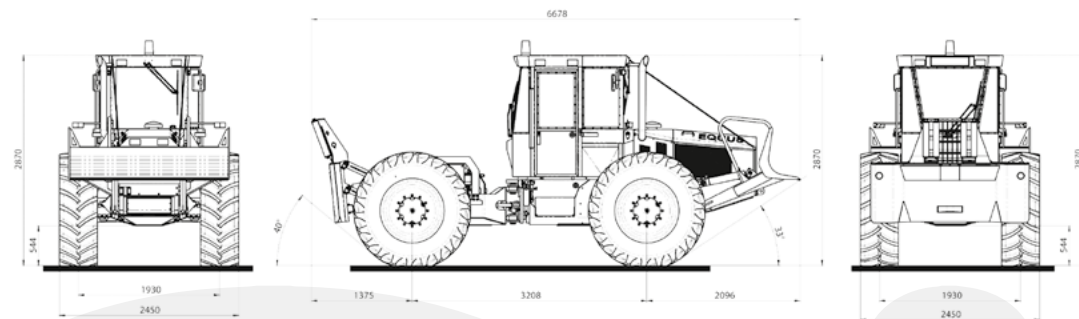
Pump	90 cm ³
Total volume	220 l
Tank volume	110 l

Axles

Type	NAF STT
Specifications	rigid, wet lamellar brakes and four-wheel handbrake
Max. static load	14 t

Winch

Type	Front toothing in the transmission gearbox
No. of drums	2
Towing power	2x 8 t
Winding speed	0,65 m/s
Rope capacity	2x 80 m Ø14 mm



Cabin

Type	Safety cabin EQUUS (FOPS, ROPS, OPS)
Specifications	Tilting with suspension and 2 doors
Glasses	Safety from Plastrance company
Seat	Grammer - mechanically suspended
Radio	VDO with MP3/USB

Frames

Type	steel (front and rear)
Steel quality	high-strength steel (S690QL)
Range of axial bearing	15°
Vertical pins	45°

Front blade

Width	2000 mm
-------	---------

Rear shield

Width	2000 mm
-------	---------

EQUUS 175N BL

Additional equipment

Tyres

540/70 - 30 ALLIANCE FOREST	min. width 2470 mm
23.1 - 26 ALLIANCE FOREST	min. width 2470 mm
23.1 - 26 NOKIAN FOREST	min. width 2470 mm
28L - 26 ALLIANCE FOREST	min. width 2700 mm
28L - 26 NOKIAN FOREST	min. width 2700 mm

EQUUS chains

EQUUS TA14 (mud + rocks)	14 mm 23,1 - 26
EQUUS TA14 (mud + rocks)	14 mm 540/70 x 30,5
EQUUS TA16 (mud + rocks)	16 mm 23,1 - 26
EQUUS TA16 (mud + rocks)	16 mm 540/70 x 30,5
EQUUS BD20 - 16 (mud)	16 mm 23,1 - 26

Cabin

Air conditioning
Radio MP3/USB/Bluetooth
Seat GRAMMER - pneumatically suspended with armrests
8x working lights LED
Windscreen wiper speed switch
Immobilizer

Winch

Winding speed 2-stages	1,35 m/s - 0,65 m/s
Towing power of the winch up to	2x10 t
Steel rolled ropes 2x 80 m,	Ø14 mm
Steel rolled ropes 2x 115 m,	Ø14 mm*
Choker chains 2x 2,5m and sliding hangers 2x 3 pcs	
<i>*after consultation, there is a possibility to order also another rope dimensions</i>	

Remote control B & B Telenot

- for winch
- for winch and drive

Towing device

- manual
- automatic

Front blade

Teeth (grap) at front blade
Tool boxes at front blade
Chain saw holder

Colour changing (except the frames, front blade and rear shield)



175N BH



Scan QR code and watch the video



WHEELED FORESTRY SKIDDER **EQUUS 175N BH**

Rugged version of forestry skidder EQUUS 175N BH with front blade, rear shield and stronger reel offers more comfortable solution for customers used to classic way of winning.

Weight of skidder begins at 10.000kg.

EQUUS



Technical parameters

Basic specification

Length	6480 mm
Width	2450 mm
Height	2980 mm
Ground clearance	560 mm
Weight	10000 kg

Engine

Type	CUMMINS B45, STAGE V.
Power	129 kW (175 hp) / 2200 rpm
Torque	780 Nm / 1500 rpm
Type	diesel with direct fuel injection (Electronic Common Rail)
No. of cylinders	4
Volume of cylinders	4,5 l
Fuel system	water separator, fuel filter
Lubrication	pressurized, circulating with wet pan and with oil filter
Cooling	coolant circulation with wet pump and oil filter, termo-regulation valve

Gearbox

Type	hydrostatic
Specifications	3 automatic modes and 2 mechanical transmission
1. speed	0 - 18 km/h (turtle)
2. speed	0 - 40 km/h (rabbit)
Max. speed	40 km/h forward and backward

Hydraulic system

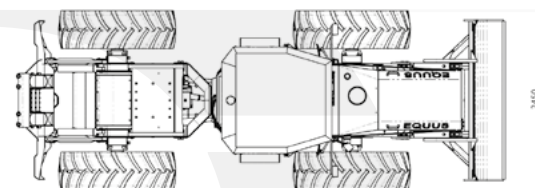
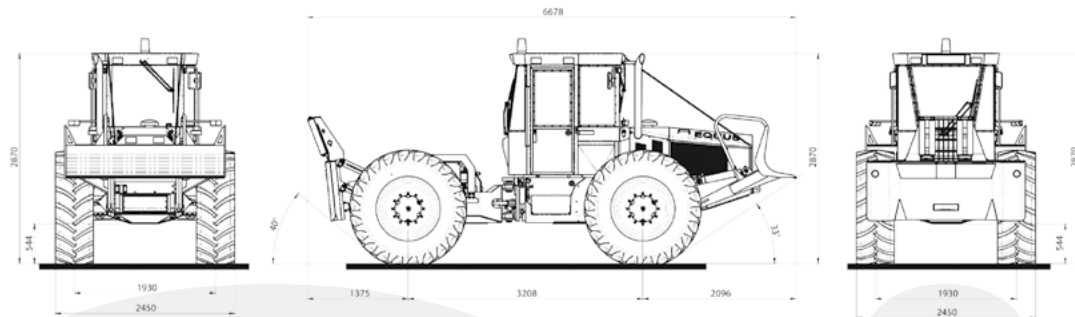
Pump	100 cm ³
Total volume	220 l
Tank volume	110 l

Axles

Type	NAF STT
Specifications	rigid, wet lamellar brakes and four-wheel handbrake
Max. static load	17 t

Winch

Type	Front toothing in the transmission gearbox
No. of drums	2
Towing power	2x 10 t
Winding speed	1,35 m/s - 0,65 m/s
Rope capacity	2x 115 m Ø14 mm



Cabin

Type	Safety cabin EQUUS (FOPS, ROPS, OPS)
Specifications	Tilting with suspension and 2 doors
Glasses	Safety from Plastrance company
Seat	Grammer - mechanically suspended
Radio	VDO with MP3/USB

Frames

Type	steel (front and rear)
Steel quality	high-strength steel (S690QL)
Range of axial bearing	15°
Vertical pins	45°

Front blade

Width	2200 mm
-------	---------

Rear shield

Width	2200 mm
-------	---------

BH 175N

Additional equipment

Tyres

540/70-30 ALLIANCE FOREST min. width 2470 mm
23.1 - 26 ALLIANCE FOREST min. width 2470 mm
23.1 - 26 NOKIAN FOREST min. width 2470 mm
28L - 26 ALLIANCE FOREST min. width 2700 mm
28L - 26 NOKIAN FOREST min. width 2700 mm

EQUUS chains

EQUUS TA14 (mud + rocks) 14 mm 23,1 - 26
EQUUS TA14 (mud + rocks) 14 mm 540/70 x 30,5
EQUUS TA16 (mud + rocks) 16 mm 23,1 - 26
EQUUS TA16 (mud + rocks) 16 mm 540/70 x 30,5
EQUUS BD20-16 (mud) 16 mm 23,1 - 26

Cabin

Air conditioning
Radio MP3/USB/Bluetooth
Electrical rotatable working place
Rear camera
8x working lights LED
Windscreen wiper speed switch
Immobilizer
Frame locking

Seat

GRAMMER - pneumatically suspended with armrests
GRAMMER ACTIMO XL - pneumatically suspended with armrests + heating + joystics holders
GRAMMER EVOLUTION - pneumatically suspended with armrests + heating + joystics holders + ventilation + 3-ways of suspending

Winch

Towing power of the winch up to 15 t
Capacity up to 2x 160 m, Ø14 mm
Steel rolled ropes 2x 115 m, Ø14 mm
Steel rolled ropes 2x 160 m, Ø14 mm*
Choker chains 2x 2,5m and sliding hangers 2x 3 pcs
*after consultation, there is a possibility to order also another rope dimensions

BIO packet

Hydraulic BIO oil with additional filter
--

Trailer terminal

- without moving (turning of drawbars)
- moving (depends on trailer)

Towing device

- manual
- automatic

Brakes for trailer

- hydraulic
- pneumatic

Others

Pre-installation for hydraulic arm
Hydraulic pump 130 cm ³ up to max 310 BAR
Vacuum pump for hydraulic oil
Fun-Drive cooling

Colour changing (except the frames, front blade and rear shield)



Front blade

Teeth (grap) at front blade
Tool boxes at front blade
Chain saw holder

Front loader

- TracLift TL 340 SL
- Hauer: Front loader XB 130

PTO

- BASIC 50 KW
- PROFI 110 KW

175N UN



Scan QR code and watch the video



WHEELED FORESTRY SKIDDER **EQUUS 175N UN**

Universal concept of EQUUS 175N with hydraulic arm EQUUS120 of our own and grapple manufactured by well-known Gripen company in version of 0,35 will impress also the most ambitious customers.

With the closing clambunk and additional equipment, it is the most frequently sold version.

Weight of skidder begins at 12.600 kg.



Technical parameters

Basic specification

Length	7850 mm
Width	2450 mm
Height	3000 mm
Ground clearance	560 mm
Weight	12600 kg

Engine

Type	CUMMINS B45, STAGE V.
Power	129 kW (175 hp) / 2200 rpm
Torque	780 Nm / 1500 rpm
Type	diesel with direct fuel injection (Electronic Common Rail)
No. of cylinders	4
Volume of cylinders	4,5 l
Fuel system	water separator, fuel filter
Lubrication	pressurized, circulating with wet pan and with oil filter
Cooling	coolant circulation with wet pump and oil filter, termo-regulation valve

Gearbox

Type	hydrostatic
Specifications	3 automatic modes and 2 mechanical transmission
1. speed	0 - 18 km/h (turtle)
2. speed	0 - 40 km/h (rabbit)
Max. speed	40 km/h forward and backward

Hydraulic system

Pump	100 cm ³
Total volume	220 l
Tank volume	110 l

Hydraulic arm

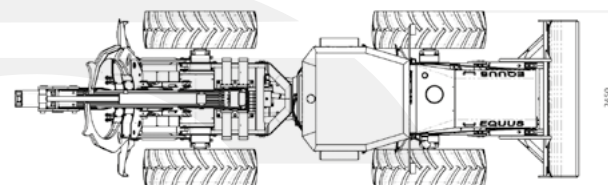
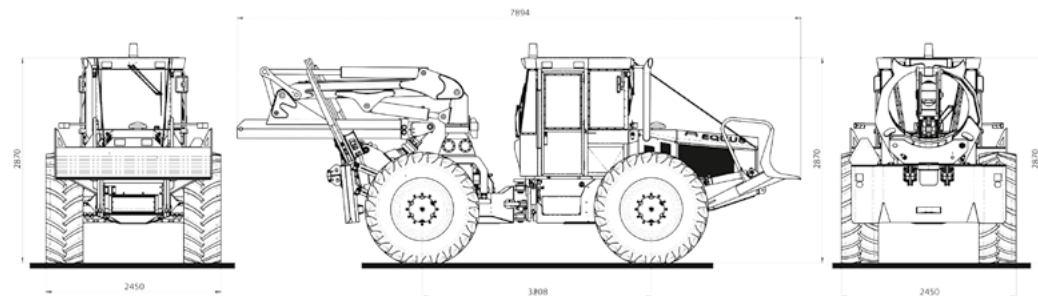
Type	EQUUS 120
Specification	1 telescope
Lift	120 kN
Length	6,1m
Grapple	Gripen 035
Max. opening	1880 mm

Axles

Type	NAF STT
Specifications	rigid, wet lamellar brakes and four-wheel handbrake
Max. static load	17 t

Grapple

Producer	Gripen
Type	035
Area	0,35 m ²
Max. opening	1880 mm
Max. payloads	5000 kg
Weight	255 kg



Cabin

Type	Safety cabin EQUUS (FOPS, ROPS, OPS)
Specifications	Tilting with suspension and 2 doors
Glasses	Safety from Plastrance company
Seat	Grammer - mechanically suspended
Radio	VDO with MP3/USB

Frames

Type	steel (front and rear)
Steel quality	high-strength steel (S690QL)
Range of axial bearing	15°
Vertical pins	45°

Front blade

Width	2200 mm
-------	---------

Rear shield

Width	2200 mm
-------	---------

Winch

Type	Front toothing in the transmission gearbox
No. of drums	2
Towing power	2x 11 t
Winding speed	1,35 m/s - 0,65 m/s
Rope capacity	2x 115 m Ø14 mm

Additional equipment

Tyres

540/70-30 ALLIANCE FOREST min. width 2470 mm
23.1 - 26 ALLIANCE FOREST min. width 2470 mm
23.1 - 26 NOKIAN FOREST min. width 2470 mm
28L - 26 ALLIANCE FOREST min. width 2700 mm
28L - 26 NOKIAN FOREST min. width 2700 mm

EQUUS chains

EQUUS TA14 (mud + rocks) 14 mm 23,1 - 26
EQUUS TA14 (mud + rocks) 14 mm 540/70 x 30,5
EQUUS TA16 (mud + rocks) 16 mm 23,1 - 26
EQUUS TA16 (mud + rocks) 16 mm 540/70 x 30,5
EQUUS BD20-16 (mud) 16 mm 23,1 - 26

Cabin

Air conditioning
Radio MP3/USB/Bluetooth
Electrical rotatable working place
Rear camera
8x working lights LED
Windscreen wiper speed switch
Immobilizer
Frame locking

Pre-heating / independent heating

- engine and cabin
- engine, cabin and hydraulic oil

Remote control B & B Telenot

- for winch
- for winch and drive

Seat

GRAMMER - pneumatically suspended with armrests
GRAMMER ACTIMO XL - pneumatically suspended with armrests + heating + joystics holders
GRAMMER EVOLUTION - pneumatically suspended with armrests + heating + joystics holders + ventilation + 3-ways of suspending

Winch

Towing power of the winch up to 15 t
Capacity up to 2x 160 m, Ø14 mm
Steel rolled ropes 2x 115 m, Ø14 mm
Steel rolled ropes 2x 160 m, Ø14 mm*
Choker chains 2x 2,5m and sliding hangers 2x 3 pcs
*after consultation, there is a possibility to order also another rope dimensions

BIO packet

Hydraulic BIO oil with additional filter
--

Trailer terminal

- without moving (turning of drawbars)
- moving (depends on trailer)

Towing device

- manual
- automatic

Brakes for trailer

- hydraulic
- pneumatic

Hydraulic arm

Hydraulic arm EQUUS with length of 7,5 m and double telescope
Lighting of hydraulic arm
Wood holder for the hydraulic arm
Pre-installation for harvester head
Different types of grapples from Gripen company
Grapple with saw unit

Clambunk

Others

Hydraulic pump 130 cm ³ up to max 310 BAR
Vacuum pump for hydraulic oil
Fun-Drive cooling

Colour changing (except the frames, front blade and rear shield)



175N UN

EQUUS 175N UH



Scan QR code and watch the video



WHEELED FORESTRY SKIDDER **EQUUS 175N UH**

The machine for customers, who need a harvester head for their work. This version is suitable for thinning methods of winning or for final work after timber winning.

Except for extensive machine equipment, customer may choose between different harvester heads from Nisula or SP.

Weight of skidder begins at 13.000 kg.



Technical parameters

Basic specification

Length	7850 mm
Width	2450 mm
Height	3000 mm
Ground clearance	560 mm
Weight	13 000 kg

Engine

Type	CUMMINS B45, STAGE V.
Power	129 kW (175 hp) / 2200 rpm
Torque	780 Nm / 1500 rpm
Type	diesel with direct fuel injection (Electronic Common Rail)
No. of cylinders	4
Volume of cylinders	4,5 l
Fuel system	water separator, fuel filter
Lubrication	pressurized, circulating with wet pan and with oil filter
Cooling	coolant circulation with wet pump and oil filter, termo-regulation valve

Gearbox

Type	hydrostatic
Specifications	3 automatical modes and 2 mechanical transmission
1. speed	0 - 18 km/h (turtle)
2. speed	0 - 40 km/h (rabbit)
Max. speed	40 km/h forward and backward

Hydraulic system

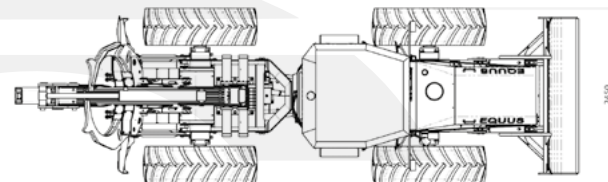
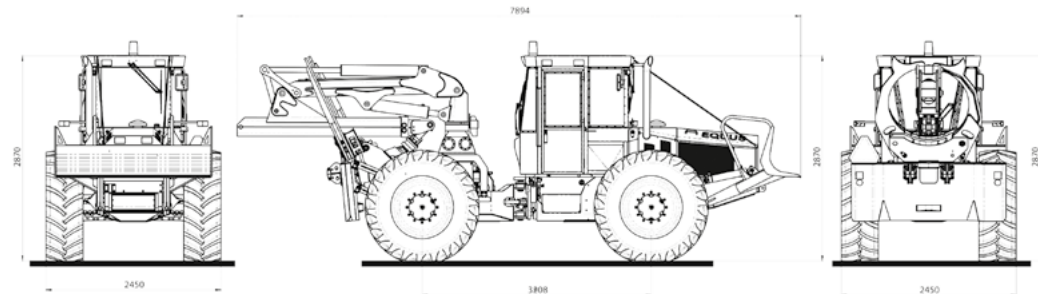
Pump	100 cm ³
Total volume	220 l
Tank volume	110 l

Hydraulic arm

Type	EQUUS 120
Specification	double telescope
Lift	120 kN
Length	7,5 m

Axles

Type	NAF STT
Specifications	rigid, wet lamellar brakes and four-wheel handbrake
Max. static load	17 t



Cabin

Type	Safety cabin EQUUS (FOPS, ROPS, OPS)
Specifications	Tilting with suspension and 2 doors
Glasses	Safety from Plastrance company
Seat	Grammer - mechanically suspended
Radio	VDO with MP3/USB

Frames

Type	steel (front and rear)
Steel quality	high-strength steel (S690QL)
Range of axial bearing	15°
Vertical pins	45°

Front blade

Width	2200 mm
-------	---------

Rear shield

Width	2200 mm
-------	---------

Winch

Type	Front toothing in the transmission gearbox
No. of drums	2
Towing power	2x 11 t
Winding speed	1,35 m/s - 0,65 m/s
Rope capacity	2x 115 m Ø14 mm

Additional equipment

Tyres

540/70-30 ALLIANCE FOREST min. width 2470 mm
23.1 - 26 ALLIANCE FOREST min. width 2470 mm
23.1 - 26 NOKIAN FOREST min. width 2470 mm
28L - 26 ALLIANCE FOREST min. width 2700 mm
28L - 26 NOKIAN FOREST min. width 2700 mm

EQUUS chains

EQUUS TA14 (mud + rocks) 14 mm 23,1 - 26
EQUUS TA14 (mud + rocks) 14 mm 540/70 x 30,5
EQUUS TA16 (mud + rocks) 16 mm 23,1 - 26
EQUUS TA16 (mud + rocks) 16 mm 540/70 x 30,5
EQUUS BD20-16 (mud) 16 mm 23,1 - 26

Cabin

Air conditioning
Radio MP3/USB/Bluetooth
Electrical rotatable working place
Rear camera
8x working lights LED
Windscreen wiper speed switch
Immobilizer
Frame locking

Seat

GRAMMER - pneumatically suspended with armrests
GRAMMER ACTIMO XL - pneumatically suspended with armrests + heating + joystics holders
GRAMMER EVOLUTION - pneumatically suspended with armrests + heating + joystics holders + ventilation + 3-ways of suspending

Winch

Towing power of the winch up to 15 t
Capacity up to 2x 160 m, Ø14 mm
Steel rolled ropes 2x 115 m, Ø14 mm
Steel rolled ropes 2x 160 m, Ø14 mm*
Choker chains 2x 2,5m and sliding hangers 2x 3 pcs
*after consultation, there is a possibility to order also another rope dimensions

BIO packet

Hydraulic BIO oil with additional filter
--

Trailer terminal

- without moving (turning of drawbars)
- moving (depends on trailer)

Towing device

- manual
- automatic

Brakes for trailer

- hydraulic
- pneumatic

Hydraulic arm

Hydraulic arm EQUUS with length of 9,5 m and double telescope
Lighting of hydraulic arm
Wood holder for the hydraulic arm

Harvester head

- NISULA 500 H, C
- NISULA 555 H, C
- SP 461 LF
- SP 561 LF

Others

Hydraulic pump 130 cm ³ up to max 310 BAR
Vacuum pump for hydraulic oil
Fun-Drive cooling

Colour changing (except the frames, front blade and rear shield)



EQUUS 175N UH



Scan QR code and watch the video

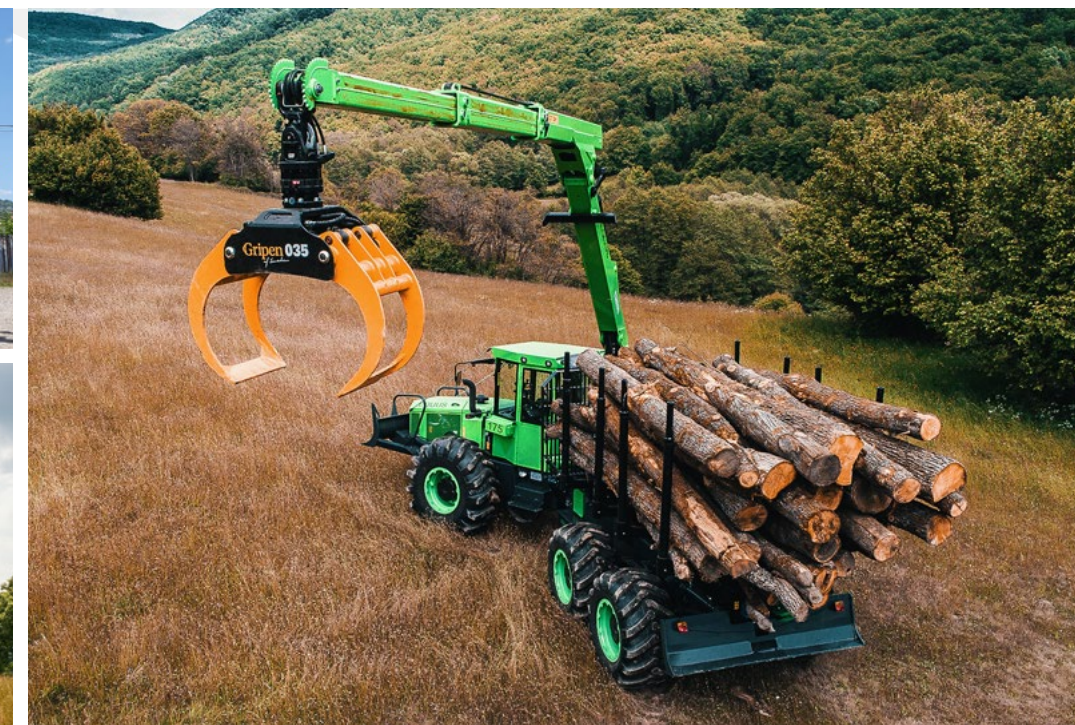


WHEELED FORESTRY SKIDDER EQUUS 175N 6WDC

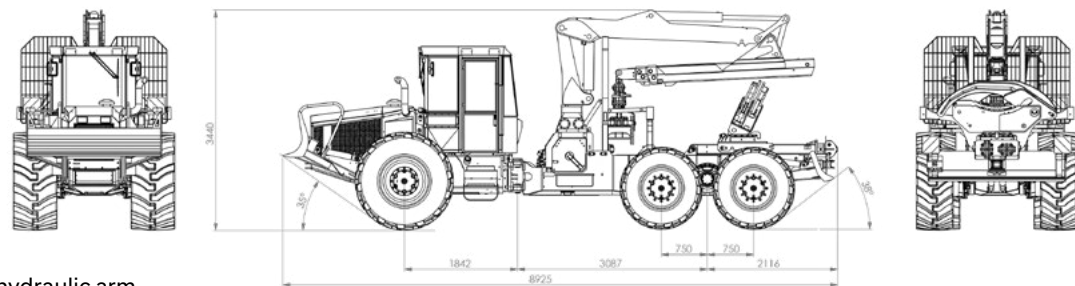
First 6-wheel vehicle model of EQUUS offers combined utilization. Except loading and carrying out of timber bulk, there is also a possibility for the customers to buy harvester head. Therefore it's possible to produce, load and transport timber with one machine at the same time.

The lowest centre of gravity predetermines it for work in most challenging terrains.

Weight of skidder begins at 17.240 kg.



Technical parameters



Basic specification

Length	8925 mm
Width	2635 mm
Height	3510 mm to stanchion, 3440 mm to hydraulic arm
Ground clearance	560 mm
Weight	17.240 kg

Engine

Type	CUMMINS B45, STAGE V.
Power	129 kW (175 hp) / 2200 rpm, 149 kW (202 hp) / 2200 rpm
Torque	780 Nm / 1500 rpm
Type	diesel with direct fuel injection (Electronic Common Rail)
No. of cylinders	4
Volume of cylinders	4,5 l
Fuel system	water separator, fuel filter
Lubrication	pressurized, circulating with wet pan and with oil filter
Cooling	coolant circulation with wet pump and oil filter, termo-regulation valve

Gearbox

Type	Hydrostatic
Specification	3 automatic modes and 2 mechanical transmission
1. Speed	0 - 14 km / h (turtle)
2. Speed	0 - 32 km / h (rabbit)
Max. speed	32 km / h (forward and backward)
Switchboard	Disconnecting of rear axles 4x4 / 4x2

Hydraulic system

Pump	130 cm ³ / 350 BAR
Total volume	286 l @ 2200
Tank volume	110 l and components

Discs

Specification	Welded, one-piece with reinforced brink and protecting cover of valve
---------------	---

Axles

Type	NAF
FRONT	17 t
Specification	Rigid, wet lamellar brakes and two-wheel handbrake with 100 % axle lock
Tyres	23.1 - 26 ALLIANCE FOREST
REAR	27 t
Specification	BOOGIE NAF with four-wheel and with 100 % axle lock
Tyres	ALLIANCE 600/55 - 26.5 20PR 172A2/165A8 TL FORESTAR 344

Cabin

Type	Safety cabin EQUUS (FOPS, ROPS, OPS)
Specifications	Tilting with two doors and 315° rotating workstation (seat)
Glasses	Safety
Seat	Grammer - pneumatically suspended
Radio	VDO with MP3/USB
Lighting	8x working lights LED
Frame locking	yes

Frames

Front and rear	steel S690QL
Steel quality	high-strength steel 700 N/mm ²
Range of axial bearing	15°
Vertical pins	43°

Front blade

Width	2.200 mm
-------	----------

Rear struts

Width	2.200 mm
-------	----------

Winch

Type	Front toothing in the transmission gearbox
No. of drums	2
Towing power	2 x 11 t
Winding speed	1,35 m/s - 0,65 m/s
Rope capacity	2 x 140 m Ø 14 mm

Grapple

Producer	Gripen
Type	035
Area	0,35 m ²
Max. opening	1880 mm
Max. payloads	5000 kg
Weight	255 kg

Hydraulic arm

Type	EQUUS 120
Specification	double telescope
Lift	120 kN
Length	9,5 m

Clambunk

Nominal load capacity	1,6 m ²
-----------------------	--------------------

Superstructure stanchion

Type	Superstructure with four stanchions (three removables), loading area
------	--

Additional equipment

Tyres

FRONT AXLE	23.1 - 26 NOKIAN FOREST MIN.WIDTH 2635 MM
------------	---

BOOGIE*

ALLIANCE FOREST 600/55-26.5 20PR 172A2/165A8 TL FORESTAR 343
NOKIAN FOREST 600/55-26.5 20PR NORDMAN FOREST TRS SF TT
NOKIAN FOREST 600/55-26.5 20PR NORDMAN FOREST TRS SF TT
*possibility to order also other types of tyres

EQUUS chains

EQUUS TA16 (mud + rocks) 16 mm 23,1 - 26
EQUUS TA16 (mud + rocks) 16 mm 540/70 x 30,5
EQUUS BD20-16 (mud) 16 mm 23,1 - 26
EQUUS chains for Boogie

Cabin

Air conditioning
Radio MP3/USB/Bluetooth
Rear camera
Windscreen wiper speed switch
Immobilizer

Pre-heating / independent heating

- engine and cabin
- engine, cabin and hydraulic oil

Remote control B & B Telenot

- for winch
- for winch and drive

Seat

GRAMMER ACTIMO XL - pneumatically suspended with armrests + heating + joystics holders
GRAMMER EVOLUTION - pneumatically suspended with armrests + heating + joystics holders + ventilation + 3 ways of suspending

Winch

Towing power up to 15 t
Choker chains 2 x 2,5 m and sliding hangers 2 x 3 pcs

Hydraulic arm

Lighting of hydraulic arm
Wood holder for the hydraulic arm
Pre-installation for harvester head
*possibility to order different types of grapples (or saw unit) from Grippen company

BIO packet

Hydraulic BIO oil with additional filter
--

Harvester head

- NISULA 500 H, C
- NISULA 555 H, C
- SP 461 LF
- SP 561 LF

Front blade

Teeth (grap) at front blade
Tool boxes at front blade
Chain saw holder

Trailer terminal

- without moving (turning of drawbars)
- moving (depends on trailer)

Towing device

- manual
- automatic

Others

Fun-Drive cooling

Colour changing (except the framex, front blade and rear shield)



PTO - CARDAN

Would you like to have forestry skidder, but you need to do also mulching, or to pursue different works using the output shaft take-off and don't want to buy another single-purpose tractor?

So choose the possibility of combination of the most powerful hydrostatic power and unique gear and nothing will stop you to make the most difficult work.

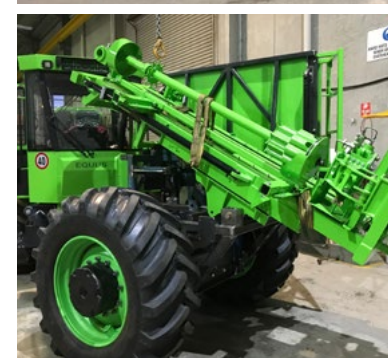


DIFFERENT USES

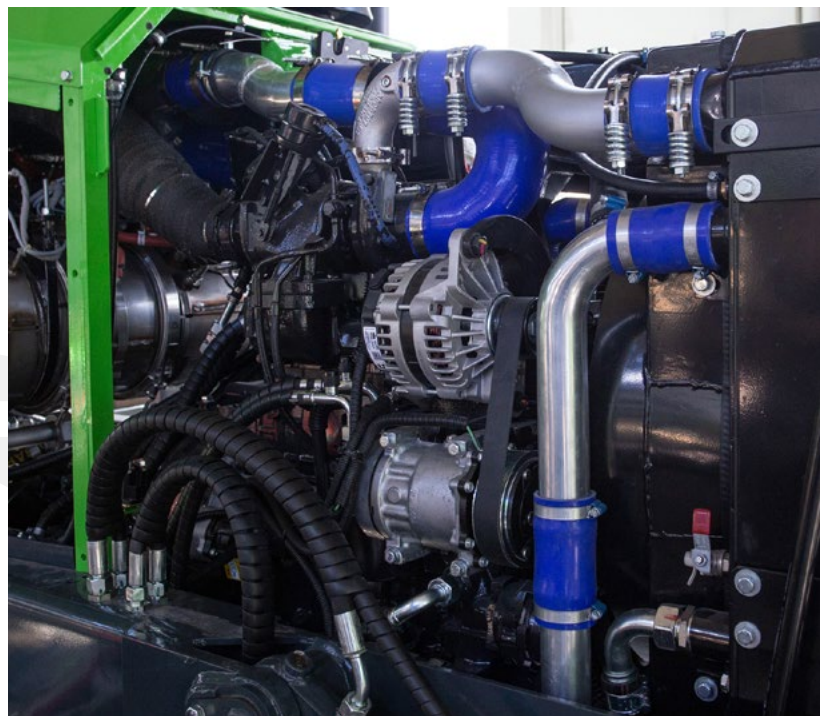
Do you need to use the skidder for atypical temporary works, for example construction, ground adjustment?

It can be very simple: with rugged quick clamping system, you will be able to install many of forest grabs, steaming grabs, grabs for brushwoods, mulching heads, trimmer heads, grabs with saw, etc at the hydraulic arm of EQUUS.

Our customer from Australia applied the drilling set for soil sampling to our undercarriage.



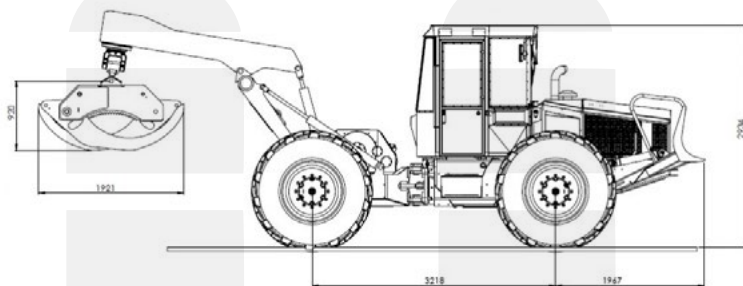




COMING SOON...

EQUUS 175N UK

Universal machine with UK label is offering general usability for its customers. The skidder is interesting mainly due to rugged grab with maximal opening more as 2,6 m. Therefore, the skidder is able to manipulate not only with huge amount of timber of smaller diameter, but also to manipulate with huge and robust woods.






EQUUS


SITTRANS s.r.o.




Head Office: Okrajová 2794/11, 969 01 Banská Štiavnica, Slovak Republic

Production: Trate Mládeže 1, 969 01 Banská Štiavnica, Slovak Republic



 info@equuseu.com

 www.equuseu.com

   [equuseu](#)